



Epidemiology Unit

Ministry of Health & Indigenous Medical Services

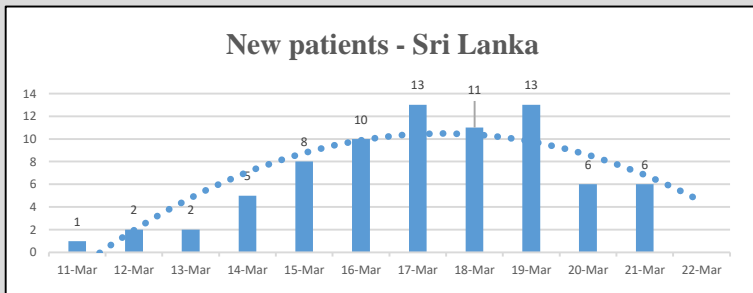
231, De Saram Place, Colombo 10, Sri Lanka

Tele: (+94 11) 2695112, 2681548, 4740490, 4740491, 4740492 Fax: (+94 11) 2696583 E-mail: chepid@slt.net.lk, epidunit@slt.net.lk Web: www.epid.gov.lk

Coronavirus disease 2019 (COVID-19) - Situation Report – 22.03.2020 – 10.00am

An outbreak of pneumonia of unknown reason was first reported on 31st December 2019 from Wuhan City in Hubei Province of China. On 7th Jan 2020, it was diagnosed as “Novel Corona Virus”. On 30th Jan 2020, World Health Organization has declared it as a Public Health Emergency of International Concern (PHEIC). On 11/02/2020 the WHO has introduced a short form for the diseases as COVID-19 and on 11/03/2020 declared as pandemic. The incubation period is reported as 2-14 days.

Local Situation



- Last confirmed patient identified on 21/03/2020
- Total number of confirmed – 78 (1 in Jan, 77 in Mar)
- 77 patients- (IDH 70, BH Welikanda 7)
- Total number of individuals in hospitals - 222

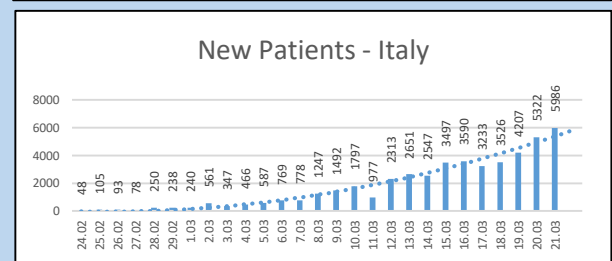
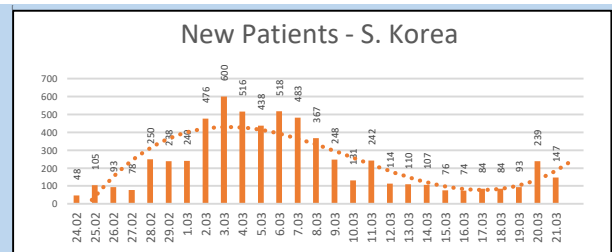
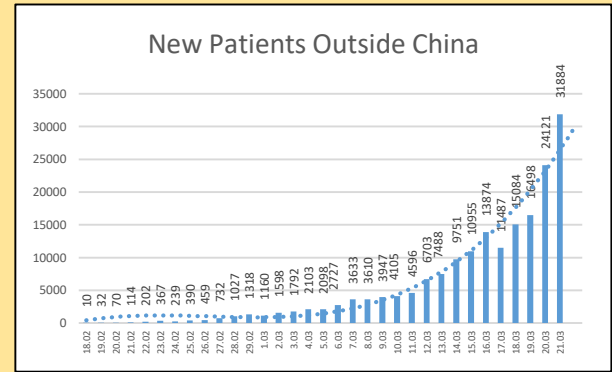
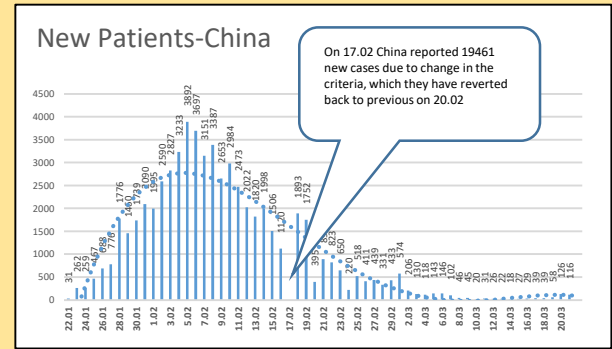
Name of the Hospital	Cumulative			Today 10am		
	Sri Lankans	Foreigners	Total	Sri Lankans	Foreigners	Total
NIID	473	76	549	80	2	82
NHSL	63	5	68	7	1	8
TH Ragama	61	2	63	17	0	17
TH Karapitiya	89	12	101	11	0	11
TH A'pura	34	2	36	0	0	0
TH Kurun.	101	1	102	11	0	11
TH Jaffna	10	1	11	1	1	2
NH Kandy	49	5	54	2	0	2
TH Battico.	11	0	11	1	0	1
DGH Gampaha	76	4	80	26	0	26
DGH Negombo	97	12	109	13	0	13
TH Rathn.	65	0	65	5	0	5
PGH Badulla	21	0	21	0	0	0
LRH	22	0	22	1	0	1
DMH	2	0	2	0	0	0
DGH Polonnaruwa	48	6	54	15	1	16
TH Kalubowila	16	0	16	0	0	0
Castle St TH	5	0	5	1	0	1
BH Ham'thota	33	0	33	1	0	1
BH Mona'gala	12	0	12	8	0	8
BH Welikanda	16	1	17	17	0	17
Total				217	5	222

Source : Epidemiology Unit, Disease Surveillance System

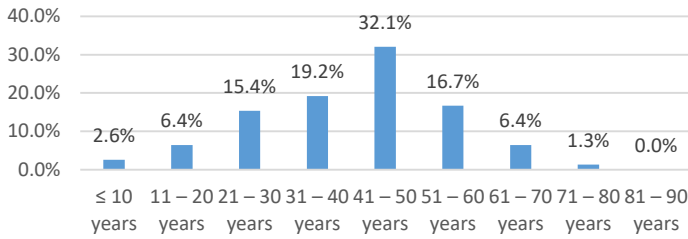
Global Situation

- 266,073 – Laboratory_confirmed cases (81,416 – China, 184,657 – Outside China)
- 11,184 deaths (3261 – China, 7923 outside China)
- Patients are reported from 182 countries/territories

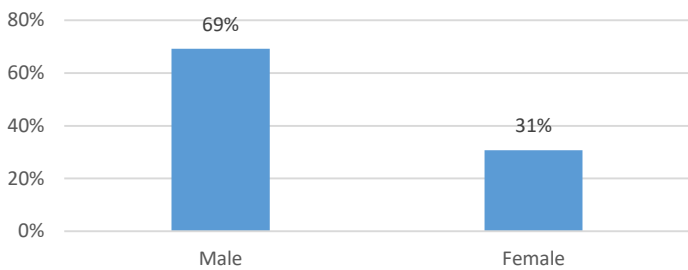
– Ref. WHO situation report - 21/03/2020



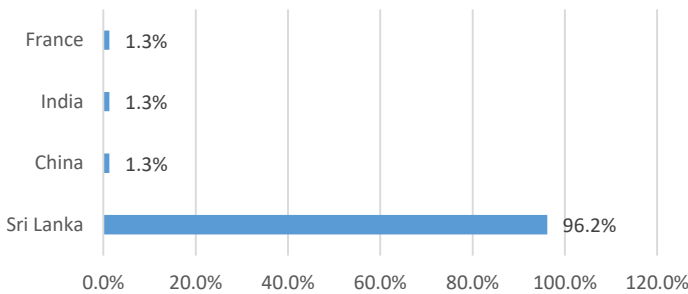
Age distribution of COVID-19 confirmed in Sri Lanka



Gender distribution of COVID-19 confirmed in Sri Lanka



COVID-19 confirmed in Sri Lanka - Nationality



District Distribution of Confirmed Patients

DISTRICT	Count
COLOMBO	16
GAMPAHA	10
PUTTALAM	6
KALUTARA	4
RATNAPURA	3
KURUNEGALA	1
GALLE	1
KEGALLE	1
BATTICOLOA	1
BADULLA	1
MATARA	0
KANDY	0
MATALE	0
NUWARAELIYA	0
HAMBANTOTA	0
JAFFNA	0
KILINOCHCHI	0
MANNAR	0
VAVUNIA	0
MULLATIVU	0
AMPARA	0
TRINCOMALEE	0
ANURADHAPURA	0
POLONNARUWA	0
MONERAGALA	0
KALMUNAI	0
QUARANTINE CENTERS	31
FOREIGNERS	3
Total	78