



Epidemiology Unit

Ministry of Health & Indigenous Medical Services

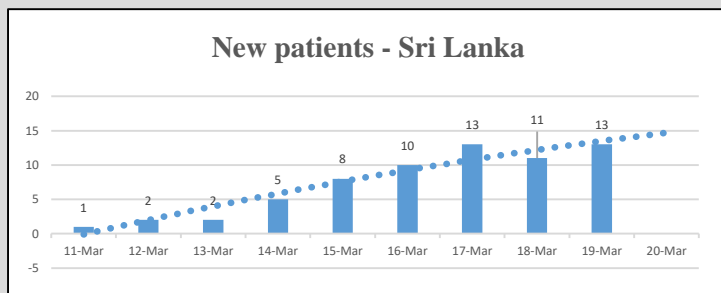
231, De Saram Place, Colombo 10, Sri Lanka

Tele: (+94 11) 2695112, 2681548, 4740490, 4740491, 4740492 Fax: (+94 11) 2696583 E-mail: chepid@stnet.lk, epidunit@stnet.lk Web: www.epid.gov.lk

Coronavirus disease 2019 (COVID-19) - Situation Report – 20.03.2020 – 10.00am

An outbreak of pneumonia of unknown reason was first reported on 31st December 2019 from Wuhan City in Hubei Province of China. On 7th Jan 2020, it was diagnosed as “Novel Corona Virus”. On 30th Jan 2020, World Health Organization has declared it as a Public Health Emergency of International Concern (PHEIC). On 11/02/2020 the WHO has introduced a short form for the diseases as COVID-19 and on 11/03/2020 declared as pandemic. The incubation period is reported as 2-14 days.

Local Situation



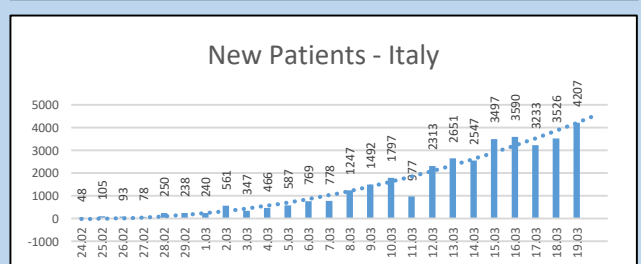
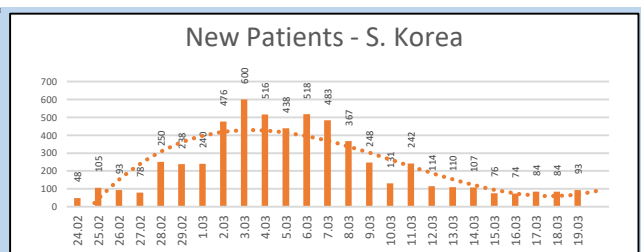
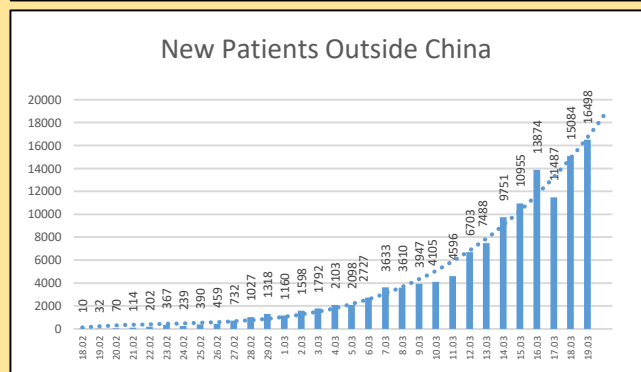
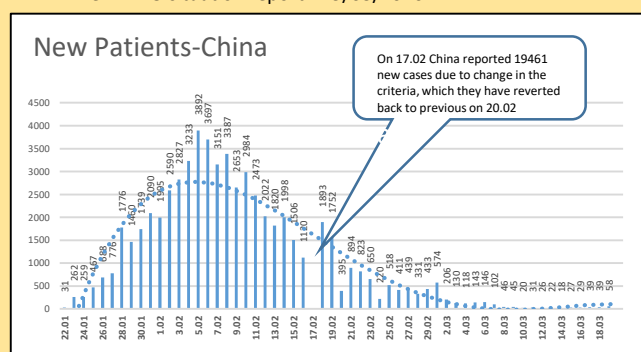
- Last confirmed patient identified on 19/03/2020
- Total number of confirmed – 66 (1 in Jan, 65 in Mar- all are at IDH.)
- Total number of individuals in hospitals - 218

Name of the Hospital	Cumulative			Today 10am		
	Sri Lankans	Foreigners	Total	Sri Lankans	Foreigners	Total
NIID	431	76	507	84	4	88
NHSL	54	4	58	12	0	12
TH Ragama	46	2	48	16	0	16
TH Karapitiya	78	12	90	3	0	3
TH A'pura	27	2	29	17	0	17
TH Kurun.	84	1	85	12	0	12
TH Jaffna	9	0	9	2	0	2
NH Kandy	44	5	49	2	0	2
TH Battico.	8	0	8	0	0	0
DGH Gampaha	51	4	55	19	0	19
DGH Negombo	69	12	81	13	0	13
TH Rathn.	56	0	56	9	0	9
PGH Badulla	15		15	0	0	0
LRH	21	0	21	3	0	3
DMH	2	0	2	0	0	0
DGH Polonnaruwa	46	5	51	20	1	21
TH Kalubowila	16	0	16	0	0	0
Castle St TH	1	0	1	1	0	1
Total	Incorrect to total as transfers counts in both the institutions			213	5	218

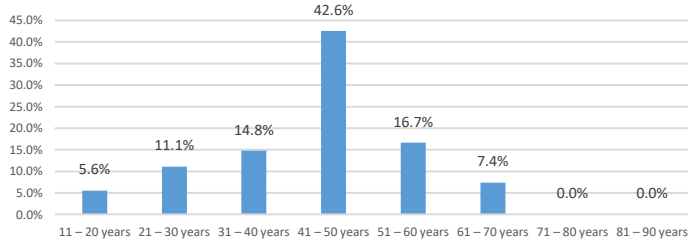
Source : Epidemiology Unit, Disease Surveillance System

Global Situation

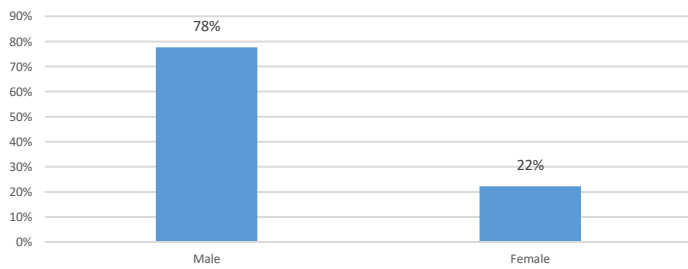
- 209,839 – Laboratory_confirmed cases (81,174 – China, 128,665 – Outside China)
 - 8778 deaths (3242 – China, 5536 outside China)
 - Patients are reported from 167 countries/territories
- Ref. WHO situation report - 19/03/2020



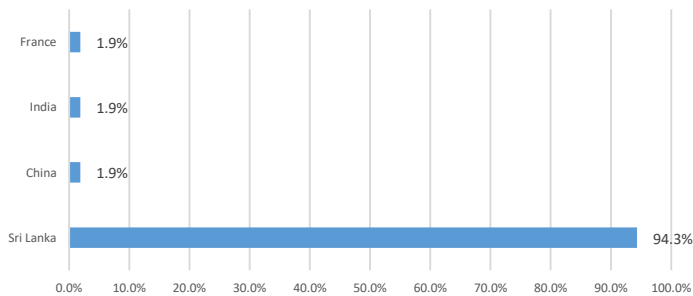
Age distribution of COVID-19 confirmed in Sri Lanka



Age distribution of COVID-19 confirmed in Sri Lanka



COVID-19 confirmed in Sri Lanka - Nationality



District Distribution of Confirmed Patients

DISTRICT	Count
GAMPAHA	18
COLOMBO	17
PUTTALAM	12
KURUNEGALA	4
KALUTARA	4
RATNAPURA	3
GALLE	1
KEGALLE	1
MATARA	1
BATTICOLOA	1
BADULLA	1
KANDY	0
MATALE	0
NUWARAELIYA	0
HAMBANTOTA	0
JAFFNA	0
KILINOCHCHI	0
MANNAR	0
VAVUNIA	0
MULLATIVU	0
AMPARA	0
TRINCOMALEE	0
ANURADHAPURA	0
POLONNARUWA	0
MONERAGALA	0
KALMUNAI	0
Foreigners	3
Total	66