

COVID-19 Epidemiology Sri Lanka

Epidemiology Unit Ministry of Health

31st October 2022

27.01.2020-31.10.2022

671,087

Total Number of Cases

16,780

Total Number of Deaths

Number Vaccinated

At least 1st dose: 17,143,780

2nd dose : 14,752,892

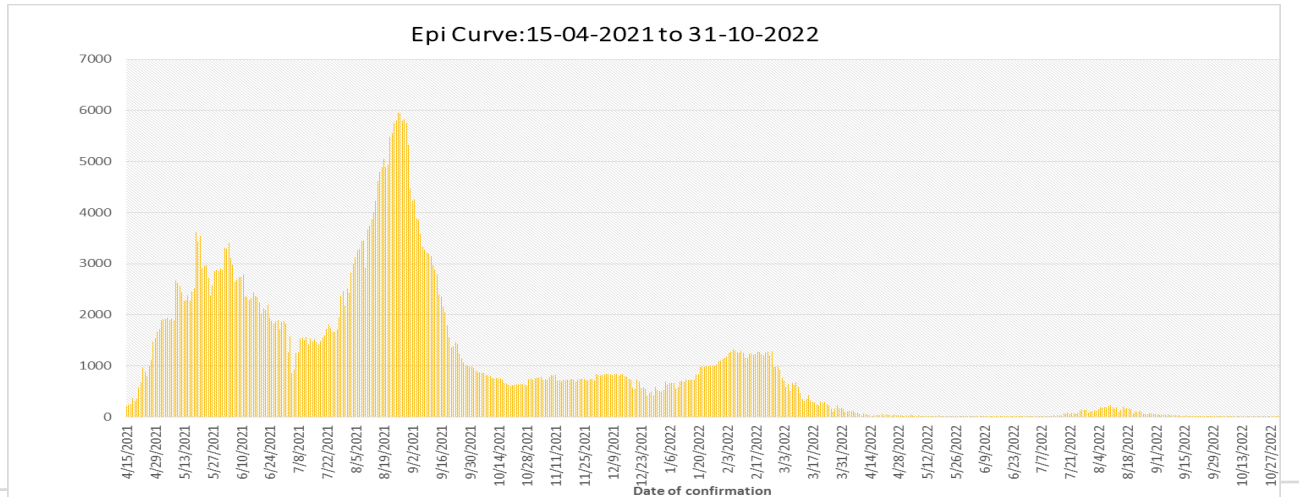
1st booster : 8,220,157

2nd booster : 202,670

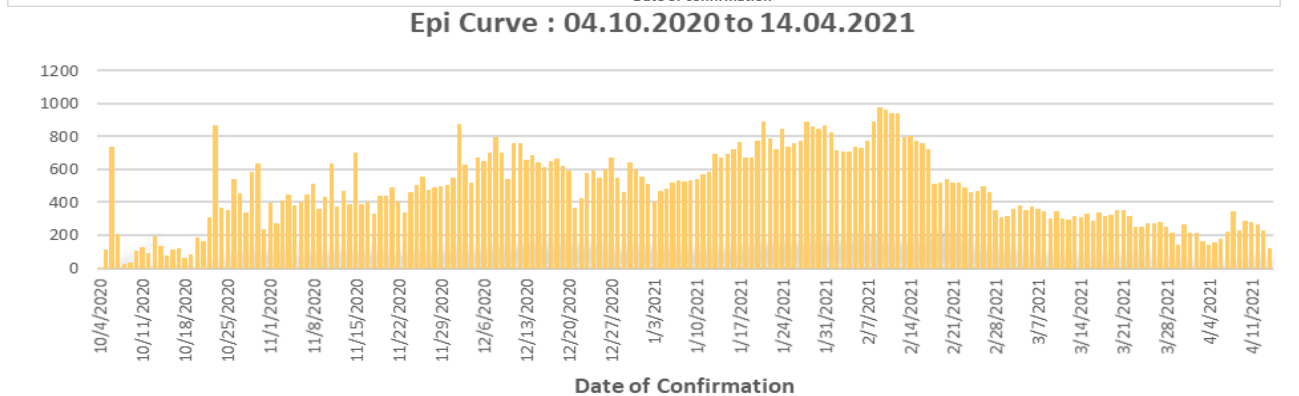
	Duration	No. of Cases	No. of Deaths	Case* Fatality Rate
1 st wave	27.01.2020-03.10.2020	3,396	13	0.38
2 nd wave	04.10.2020-14.04.2021	92,341	591	0.64
3 rd wave	15.04.2021-31.10.2022	575,350	16,176	2.81

* Case is defined as a laboratory confirmed patient

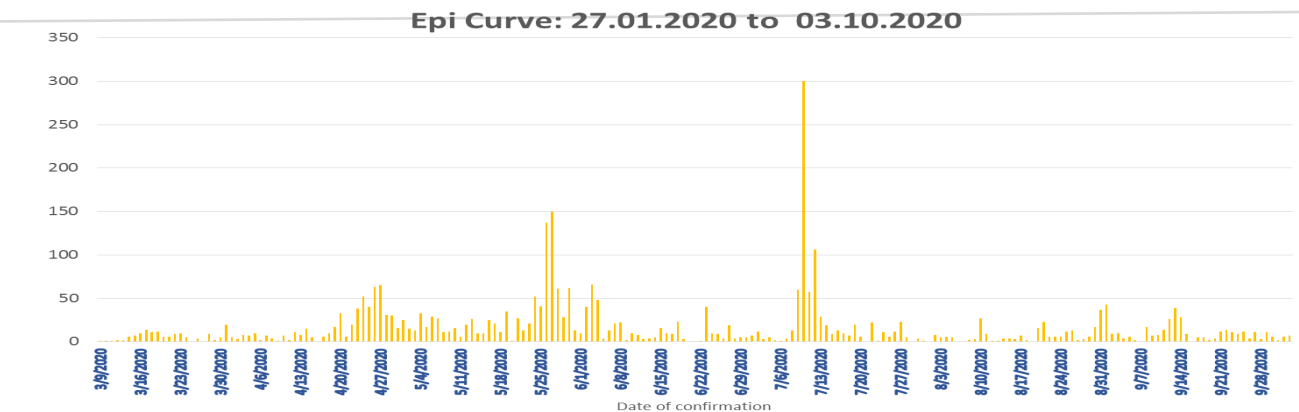
3rd wave



2nd wave



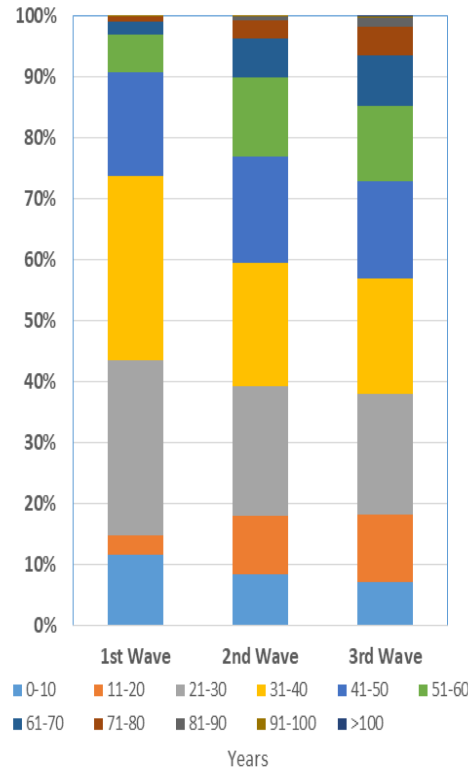
1st wave



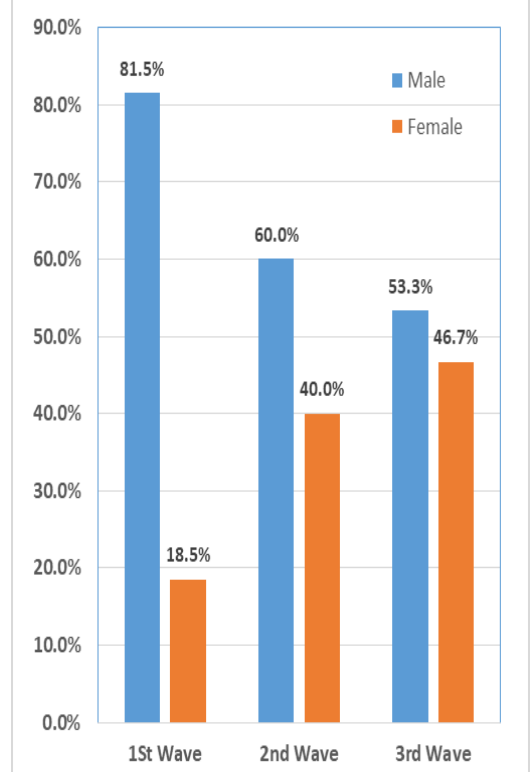
COVID-19 Cases : District Distribution

District	1 st wave	2 nd wave	3 rd wave	Total
Colombo	174	32123	111475	143772
Gampaha	51	18483	97102	115636
Kalutara	72	6986	51661	58719
Kandy	19	5710	16721	22450
Kurunegala	30	3191	28362	31583
Galle	4	2645	43204	45853
Ratnapura	9	3654	20094	23757
Matara	4	1544	21783	23331
Matale	5	1214	14366	15585
Nuwara Eliya	2	1259	11081	12342
Kegalle	10	1770	11698	13478
Jaffna	16	1441	10892	12349
Badulla	4	1358	13289	14651
Puttalam	39	1024	14324	15387
Anuradhapura	31	820	14246	15097
Hambantota	3	710	19495	20208
Trincomalee	4	651	3732	4387
Monaragala	6	545	14763	15314
Polonnaruwa	10	475	4780	5265
Ampara	9	498	13567	14074
Kalmunai	18	1296	3913	5227
Batticaloa	1	699	9189	9889
Vavuniya	2	623	3042	3667
Mullaitivu	0	278	2018	2296
Kilinochchi	0	250	9777	10027
Mannar	0	379	2150	2529

COVID-19 Cases by Age Group

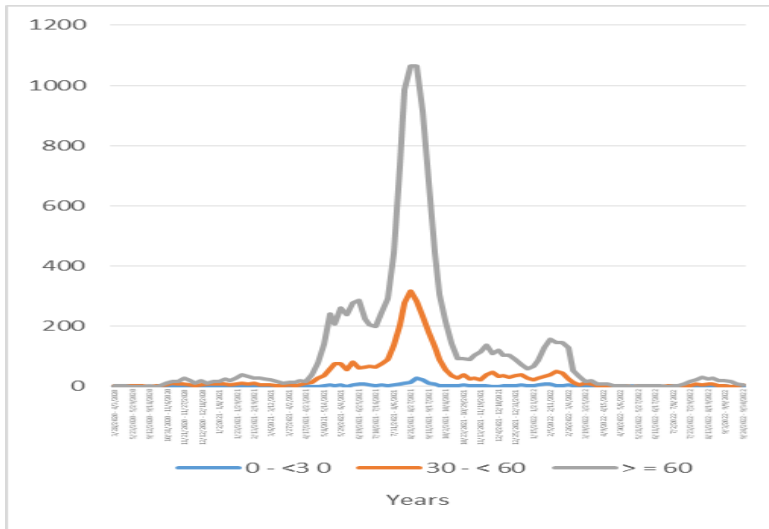


COVID-19 Cases by Sex

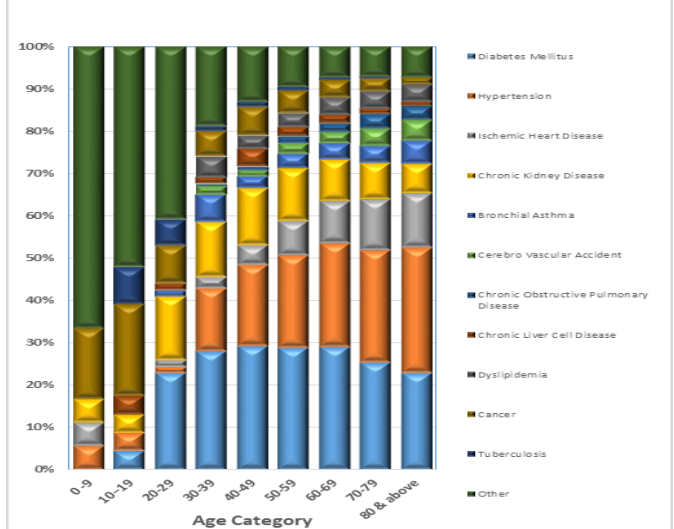


Confirmed COVID-19 Deaths

COVID-19 deaths— weekly distribution by age: 28.03.2020 – 31.10.2022

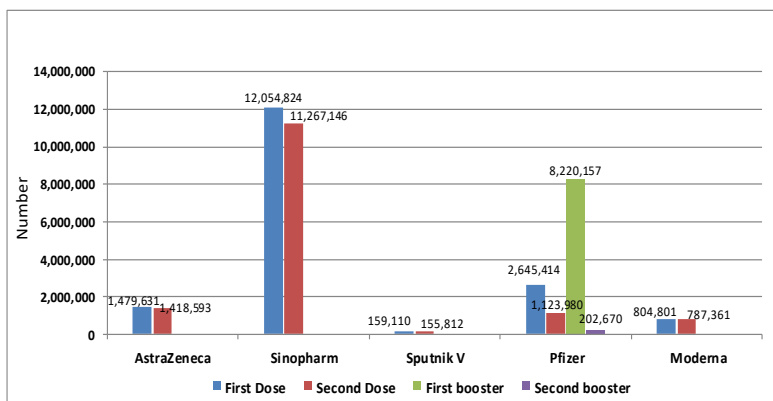


Confirmed COVID-19 deaths by Co-morbidities



Covid-19 Vaccination Program

Vaccination update : 28.01.2021 to 31.10.2022



Confirmed COVID-19 deaths by sex

