



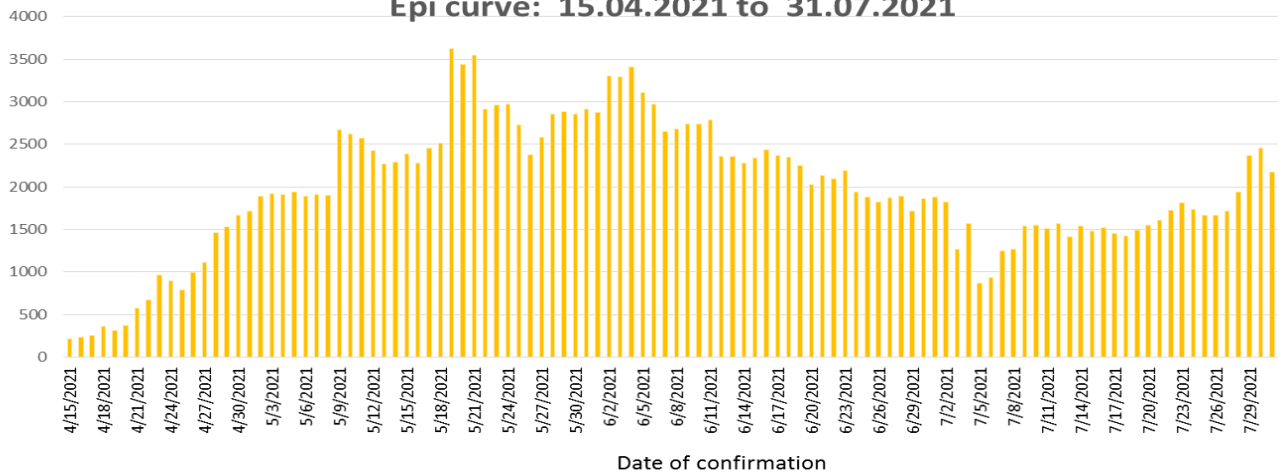
COVID-19 Epidemiology Sri Lanka

Epidemiology Unit
Ministry of Health

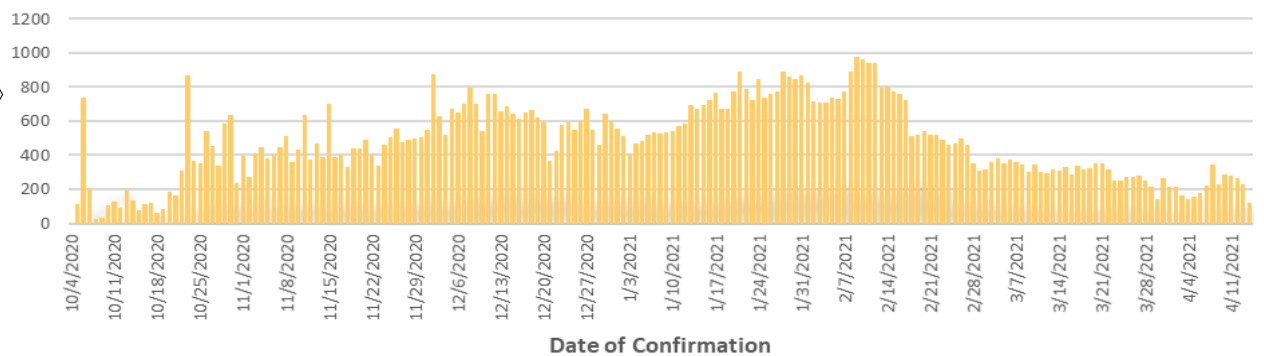
31st July 2021

27.01.2020-31.07.2021	Duration	No. of Cases	No. of Deaths	Case* Fatality Rate
308,839				
Total Number of Cases				
4,441				
Total Number of Deaths	1st wave 27.01.2020-03.10.2020	3,396	13	0.38
Number Vaccinated	2nd wave 04.10.2020-14.04.2021	92,341	591	0.64
At least 1st dose: 9,944,683	3rd wave 15.04.2021-31.07.2021	213,102	3,837	1.80
2nd dose : 2,154,206	*Case is defined as a laboratory confirmed patient			

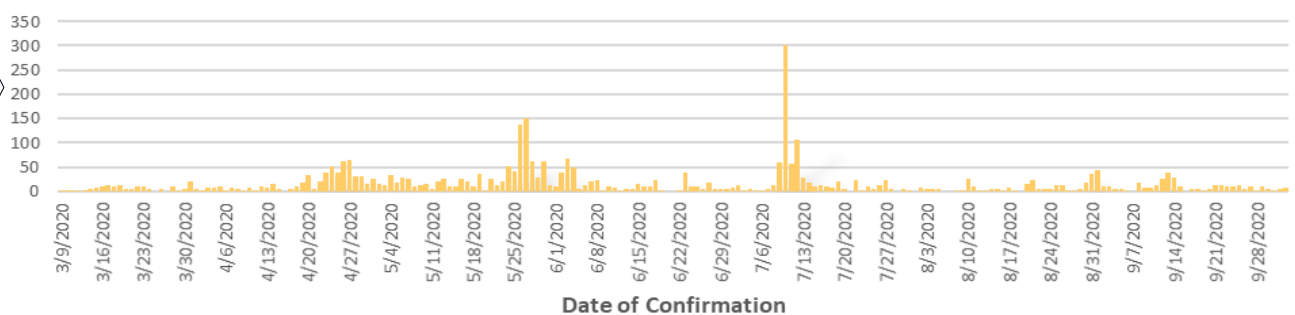
Epi curve: 15.04.2021 to 31.07.2021



Epi Curve : 04.10.2020 to 14.04.2021



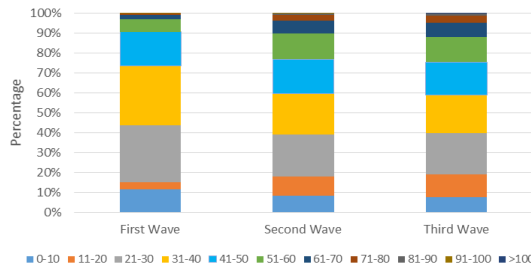
Epi Curve : 09.03.2020 to 03.10.2020



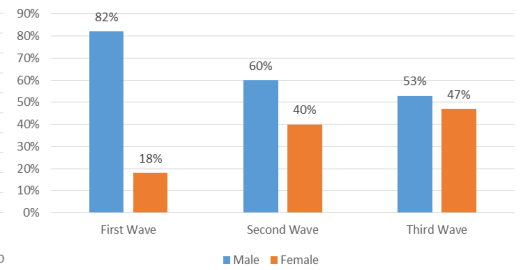
COVID-19 Cases : District Distribution

District	1 st wave	2 nd wave	3 rd wave	Total
Colombo	174	32123	38970	71267
Gampaha	51	18483	37551	56085
Kalutara	72	6986	26242	33300
Kandy	19	5710	8847	14576
Kurunagala	30	3191	12106	15327
Galle	4	2645	12192	14841
Ratnapura	9	3654	8604	12267
Matara	4	1544	6230	7778
Matale	5	1214	4475	5694
Nuwara Eliya	2	1259	6656	7917
Kegalle	10	1770	5012	6792
Jaffna	16	1441	4721	6178
Badulla	4	1358	5983	7345
Puttalam	39	1024	4486	5549
Anuradhapura	31	820	3362	4213
Hambantota	3	710	3014	3727
Trincomalee	4	651	2653	3308
Monaragala	6	545	3018	3569
Polonnaruwa	10	475	2348	2833
Ampara	9	498	1610	2117
Kalmunai	18	1296	1588	2902
Batticaloa	1	699	2480	3180
Vavuniya	2	623	1100	1725
Mullaitivu	0	278	838	1116
Kilinochchi	0	250	1230	1480
Mannar	0	379	941	1320

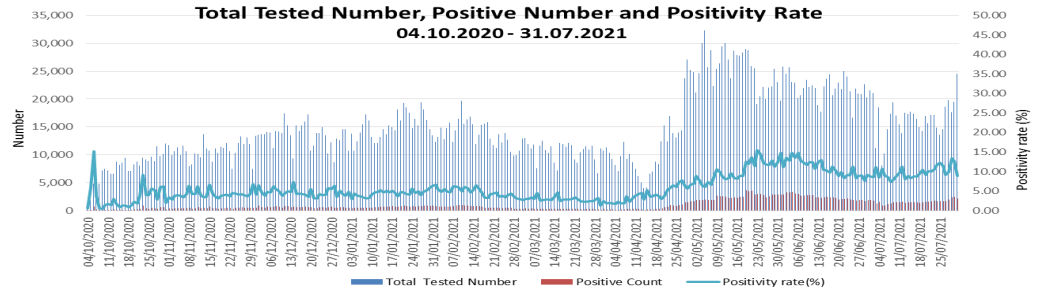
COVID-19 Cases by Age Group



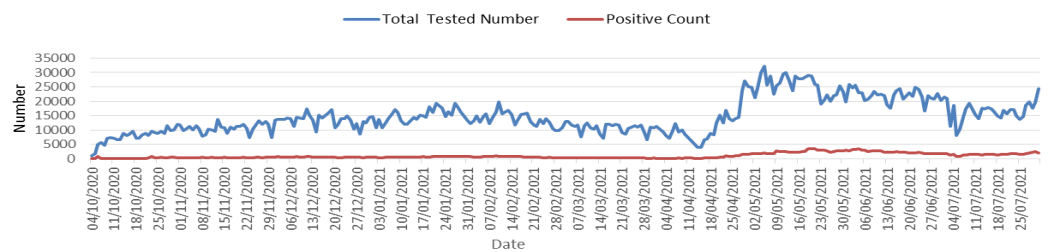
COVID-19 Cases by Sex



COVID-19 Testing

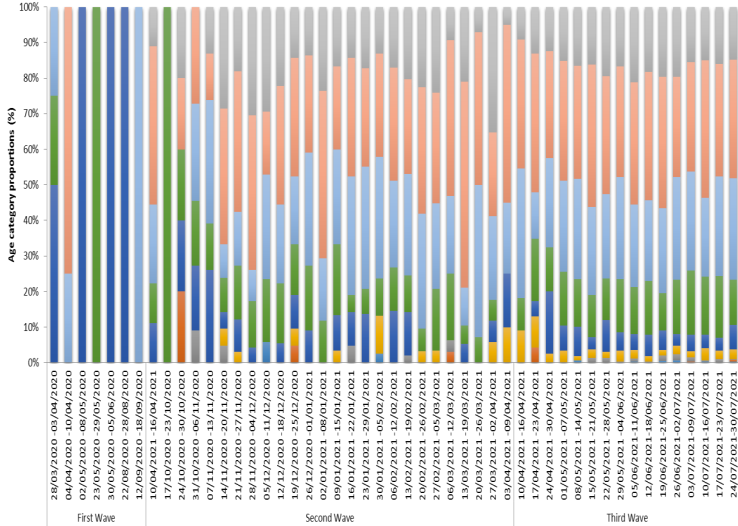


Number of Tests Performed and Confirmed cases

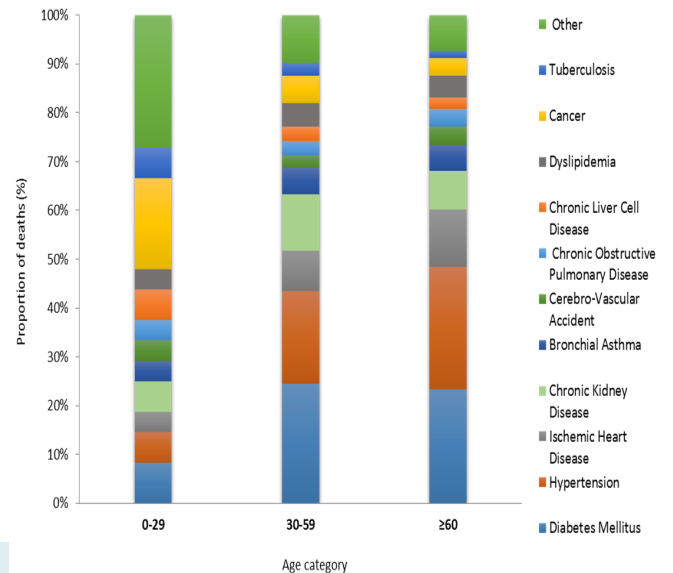


Confirmed COVID-19 Deaths

COVID-19 deaths - Weekly distribution by age : 28.03.2020 - 31.07.2021



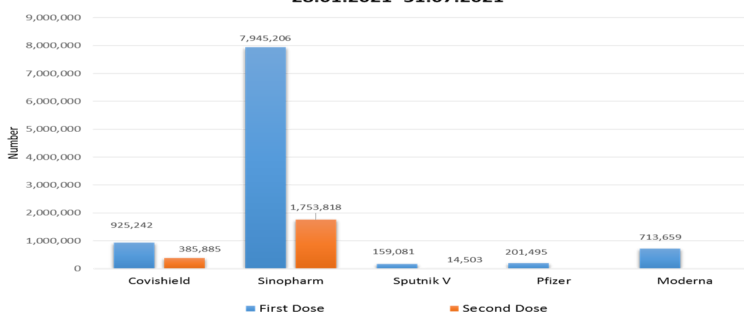
Confirmed COVID-19 deaths by co-morbidities



Covid-19 Vaccination Program

Vaccination update

28.01.2021 - 31.07.2021



Confirmed COVID-19 deaths by sex

