



Epidemiology Unit

Ministry of Health & Indigenous Medical Services

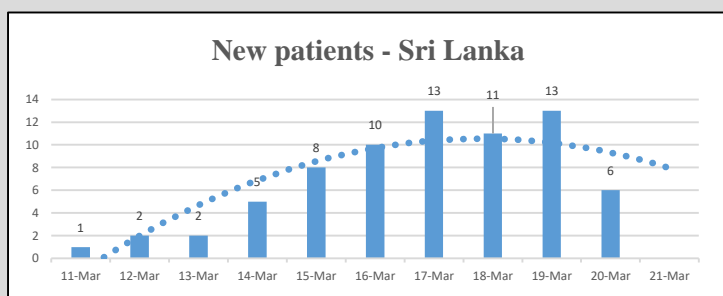
231, De Saram Place, Colombo 10, Sri Lanka

Tele: (+94 11) 2695112, 2681548, 4740490, 4740491, 4740492 Fax: (+94 11) 2696583 E-mail: chepid@slt.net.lk, epidunit@slt.net.lk Web: www.epid.gov.lk

Coronavirus disease 2019 (COVID-19) - Situation Report – 21.03.2020 – 10.00am

An outbreak of pneumonia of unknown reason was first reported on 31st December 2019 from Wuhan City in Hubei Province of China. On 7th Jan 2020, it was diagnosed as “Novel Corona Virus”. On 30th Jan 2020, World Health Organization has declared it as a Public Health Emergency of International Concern (PHEIC). On 11/02/2020 the WHO has introduced a short form for the diseases as COVID-19 and on 11/03/2020 declared as pandemic. The incubation period is reported as 2-14 days.

Local Situation



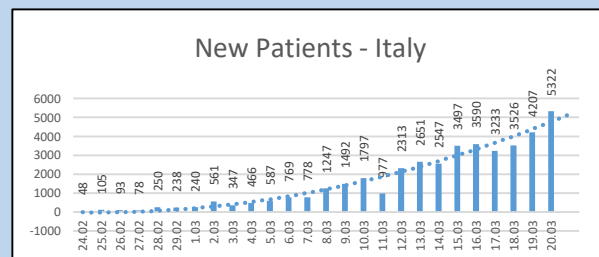
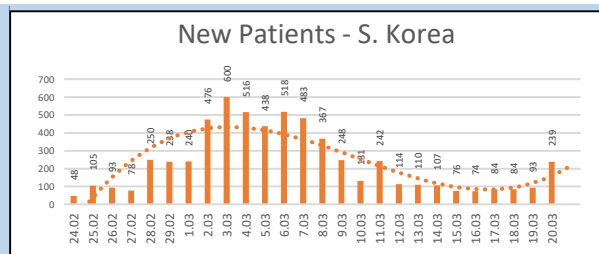
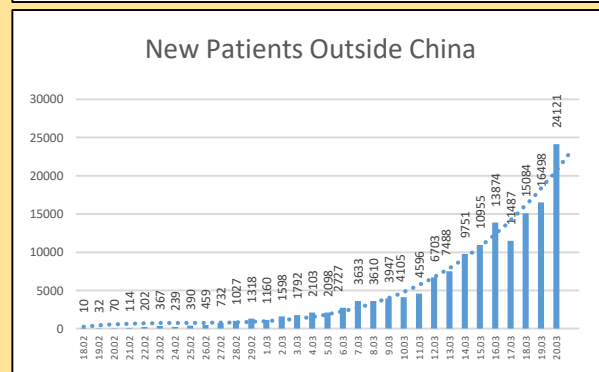
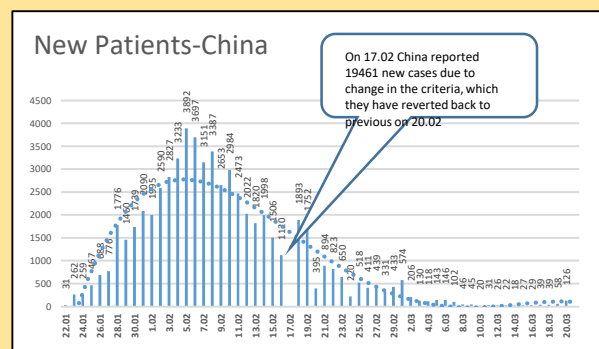
- Last confirmed patient identified on 20/03/2020
- Total number of confirmed – 72 (1 in Jan, 71 in Mar)
- 71 patients- (IDH 68, BH Welikanda 3)
- Total number of individuals in hospitals - 245

Name of the Hospital	Cumulative			Today 10am		
	Sri Lankans	Foreigners	Total	Sri Lankans	Foreigners	Total
NIID	459	76	535	84	2	86
NHSL	59	4	63	13	0	13
TH Ragama	51	2	53	16	0	16
TH Karapitiya	82	12	94	4	0	4
TH A'pura	34	2	36	10	0	10
TH Kurun.	91	1	92	7	0	7
TH Jaffna	10	1	11	1	1	2
NH Kandy	47	5	52	4	0	4
TH Battico.	10	0	10	2	0	2
DGH Gampaha	65	4	69	23	0	23
DGH Negombo	81	12	93	16	0	16
TH Rathn.	62	0	62	9	0	9
PGH Badulla	21	0	21	6	0	6
LRH	21	0	21	0	0	0
DMH	2	0	2	0	0	0
DGH Polonnaruwa	46	5	51	16	0	16
TH Kalubowila	16	0	16	0	0	0
Castle St TH	2	0	2	1	0	1
BH Ham'thota	18	0	18	4	0	4
BH Mona'gala	11	0	11	9	0	9
BH Welikanda	16	1	17	16	1	17
Total	Incorrect to total as transfers counts in both the institutions			241	4	245

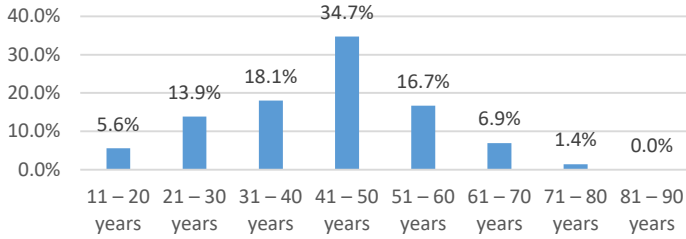
Source : Epidemiology Unit, Disease Surveillance System

Global Situation

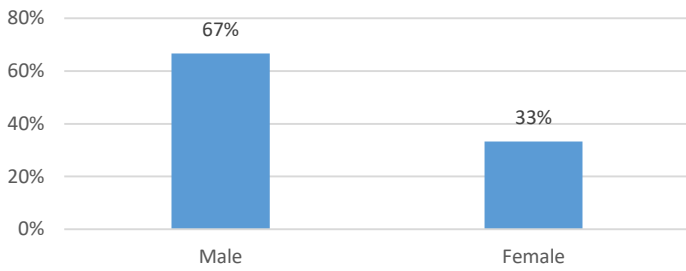
- 234,073 – Laboratory_confirmed cases (81,300 – China, 152,773 – Outside China)
 - 9840 deaths (3253 – China, 6587 outside China)
 - Patients are reported from 173 countries/territories
- Ref. WHO situation report - 20/03/2020



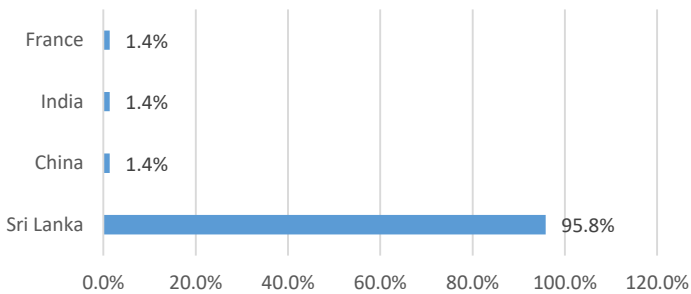
Age distribution of COVID-19 confirmed in Sri Lanka



Gender distribution of COVID-19 confirmed in Sri Lanka



COVID-19 confirmed in Sri Lanka - Nationality



District Distribution of Confirmed Patients

DISTRICT	Count
COLOMBO	16
GAMPAHA	10
PUTTALAM	6
KALUTARA	4
RATNAPURA	3
KURUNEGALA	1
GALLE	1
KEGALLE	1
BATTICOLOA	1
BADULLA	1
MATARA	0
KANDY	0
MATALE	0
NUWARAELIYA	0
HAMBANTOTA	0
JAFFNA	0
KILINOCHCHI	0
MANNAR	0
VAVUNIA	0
MULLATIVU	0
AMPARA	0
TRINCOMALEE	0
ANURADHAPURA	0
POLONNARUWA	0
MONERAGALA	0
KALMUNAI	0
QUARANTINE CENTERS	25
FOREIGNERS	3
Total	72