



Epidemiology Unit

Ministry of Health & Indigenous Medical Services

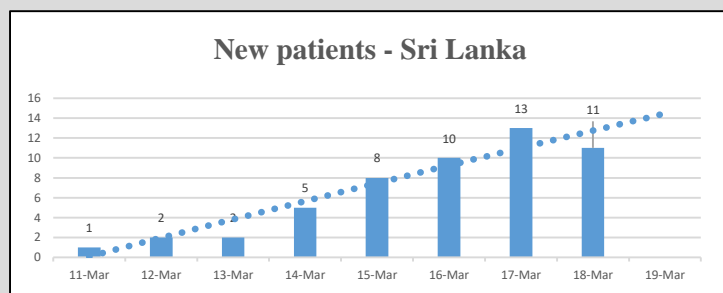
231, De Saram Place, Colombo 10, Sri Lanka

Tele: (+94 11) 2695112, 2681548, 4740490, 4740491, 4740492 Fax: (+94 11) 2696583 E-mail: chepid@stnet.lk, epidunit@stnet.lk Web: www.epid.gov.lk

Coronavirus disease 2019 (COVID-19) - Situation Report – 19.03.2020 – 10.00am

An outbreak of pneumonia of unknown reason was first reported on 31st December 2019 from Wuhan City in Hubei Province of China. On 7th Jan 2020, it was diagnosed as “Novel Corona Virus”. On 30th Jan 2020, World Health Organization has declared it as a Public Health Emergency of International Concern (PHEIC). On 11/02/2020 the WHO has introduced a short form for the diseases as COVID-19 and on 11/03/2020 declared as pandemic. The incubation period is reported as 2-14 days.

Local Situation



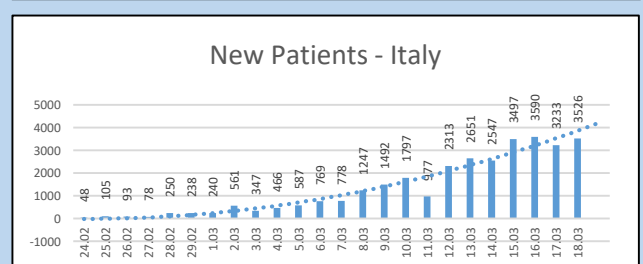
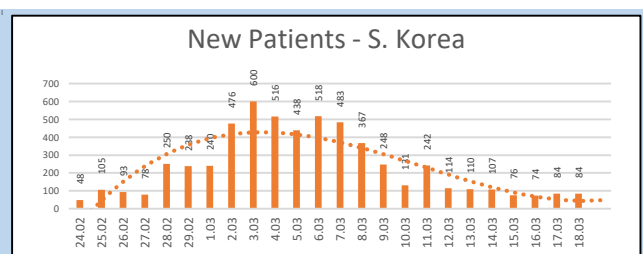
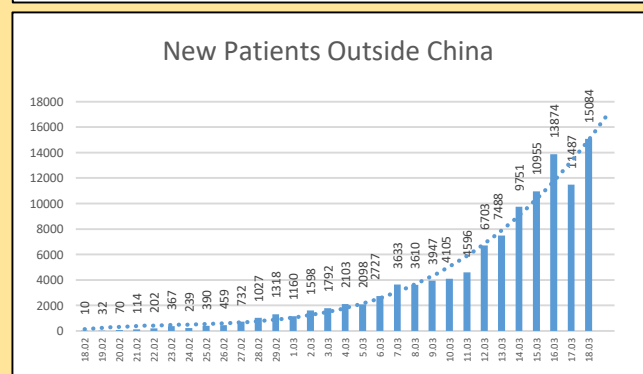
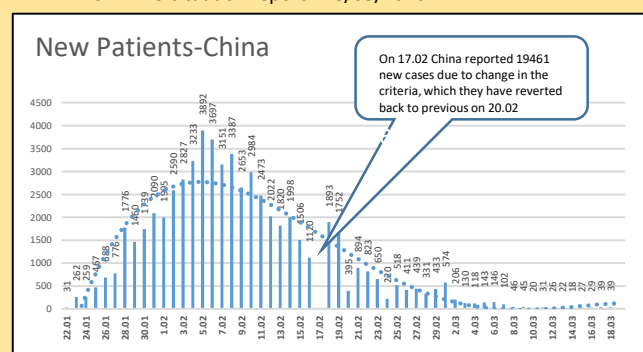
- Last confirmed patient identified on 18/03/2020
- Total number of confirmed – 53 (1 in Jan, 52 in Mar- all are at IDH.)
- Total number of individuals in hospitals - 243

Name of the Hospital	Cumulative			Today 10am		
	Sri Lankans	Foreigners	Total	Sri Lankans	Foreigners	Total
NIID	399	75	474	83	2	85
NHSL	42	4	46	7	0	7
TH Ragama	28	2	30	16	0	16
TH Karapitiya	75	12	87	5	1	6
TH A'pura	23	2	25	14	0	14
TH Kurun.	81	1	82	23	0	23
TH Jaffna	7	0	7	2	0	2
NH Kandy	42	5	47	6	0	6
TH Battico.	8	0	8	3	0	3
DGH Gampaha	42	4	46	16	0	16
DGH Negombo	69	12	81	14	0	14
TH Rathn.	52	0	52	14	0	14
PGH Badulla	15	0	15	4	0	4
LRH	20	0	20	4	0	4
DMH	2	0	2	0	0	0
DGH Polonnaruwa	41	5	46	28	1	29
TH Kalubowila	16	0	16	0	0	0

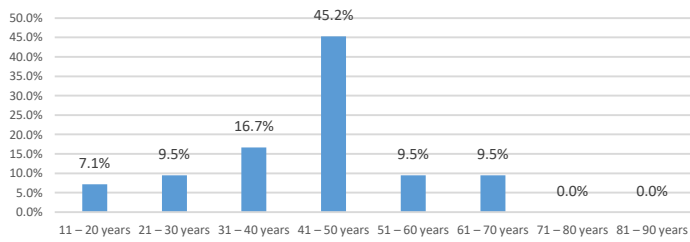
Source : Epidemiology Unit, Disease Surveillance System

Global Situation

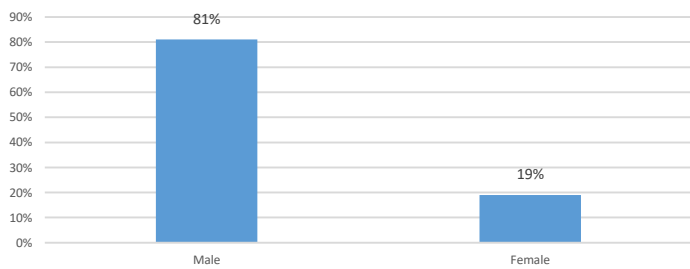
- 191,127 – Laboratory_confirmed cases (81,116 – China, 110,011 – Outside China)
 - 7807 deaths (3231 – China, 4576 outside China)
 - Patients are reported from 160 countries/territories
- Ref. WHO situation report - 18/03/2020



Age distribution of COVID-19 confirmed in Sri Lanka



Age distribution of COVID-19 confirmed in Sri Lanka



Country of Origin of COVID-19 confirmed in Sri Lanka

